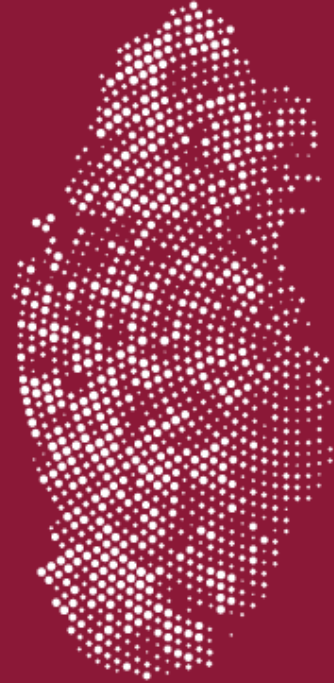


Strengthening population data analytics and visualization: Insights from UNFPA's Population Data Portal



منتدى الدوحة للبيانات
من أجل الابتكار في التنمية المستدامة

23-22 أكتوبر 2024

DOHA DATA FORUM
FOR INNOVATION IN SUSTAINABLE DEVELOPMENT

October 22-23, 2024

Willis Odek (PhD), Population and Development Advisor, UNFPA Arab States Regional Office (odek@unfpa.org)

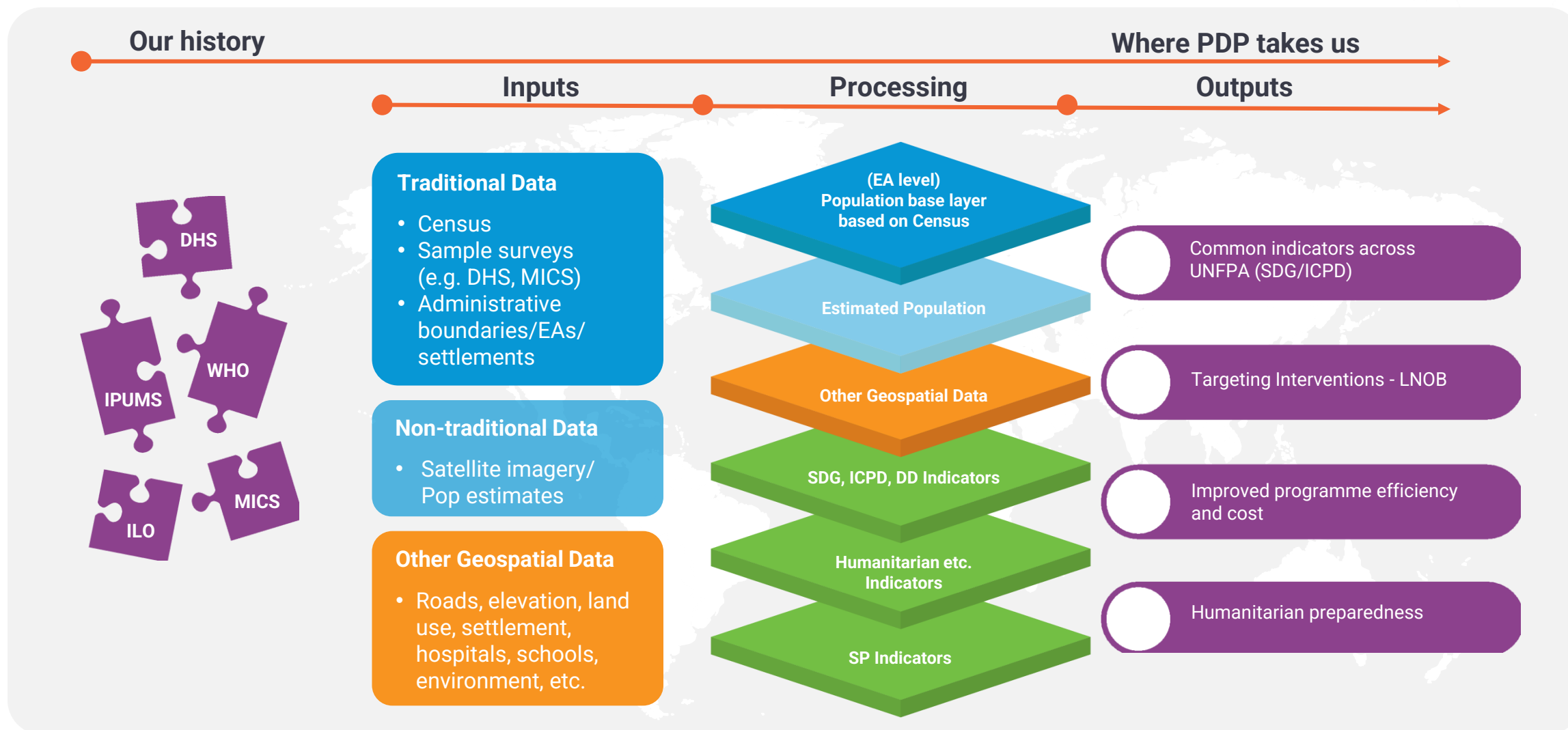
Outline

- Introduction to the UNFPA Population Data Portal (PDP)
- How the PDP works
- The value of the PDP
- Potential users and uses of the PDP
- Insights from the PDP for modernizing statistical systems

Introduction

- The UNFPA Population Data Portal (<https://pdp.unfpa.org/>) is a data visualization and analysis tool.
- The portal integrates the most current data drawn from UNFPA, other United Nations agencies and other sources into a single database.
- It presents data on over 200 indicators in eight broad categories : 1) education; 2) family planning; 3) inequality; 4) sexual and reproductive health; 5) gender equality; 6) population; 7) labor; and 8) statistical capacity.

UNFPA Population Data Portal



Use-case Approach

Tracking SDGs and ICPD, ensure LNOB

PDP for programming – with program data, and GIS analysis

Latest population census data

Support to countries

What is Unique?

- Geospatial dimension - highest quality GIS attributes - UN Boundaries
- Combine population, intervention and development indicators by location to map needs, programme for impact
- Combined population and service locations to optimize coverage



Thematic Dashboards

End the unmet need for family planning

This dashboard displays the unmet need for family planning in Afghanistan. It features a central map of Afghanistan and several line charts showing trends over time. The title is 'End the unmet need for family planning'.

Intimate Partner Violence

This dashboard focuses on SDG Indicator 5.2.1 Intimate Partner Violence. It includes a world map highlighting Afghanistan, a bar chart showing national ranking, and a bar chart for sub-national ranking. The title is 'SDG Indicator 5.2.1 Intimate Partner Violence'.

End GBV and harmful practices

This dashboard addresses gender-based violence and harmful practices. It features a world map, a bar chart for IPV for the past 12 months, and a bar chart for female genital mutilation. The title is 'Gender-based violence'.

End preventable maternal deaths

This dashboard tracks progress towards ending preventable maternal deaths. It includes a world map, a bar chart for decision-making on own health care, and a bar chart for adolescent birth rate. The title is 'End preventable maternal deaths'.

Global Census Tracker

This dashboard provides a global overview of census data. It features a world map, a bar chart for census timelines by region, and a bar chart for census timelines by UNFPA region. The title is 'Global Census Tracker'.

MISP Calculator

This dashboard is used for MISP calculations. It includes a 'Selections' section for choosing a country and a table for 'Input Data for MISP Calculator' with demographic indicators. The title is 'MISP Calculator'.

Togo EmONC Dashboard

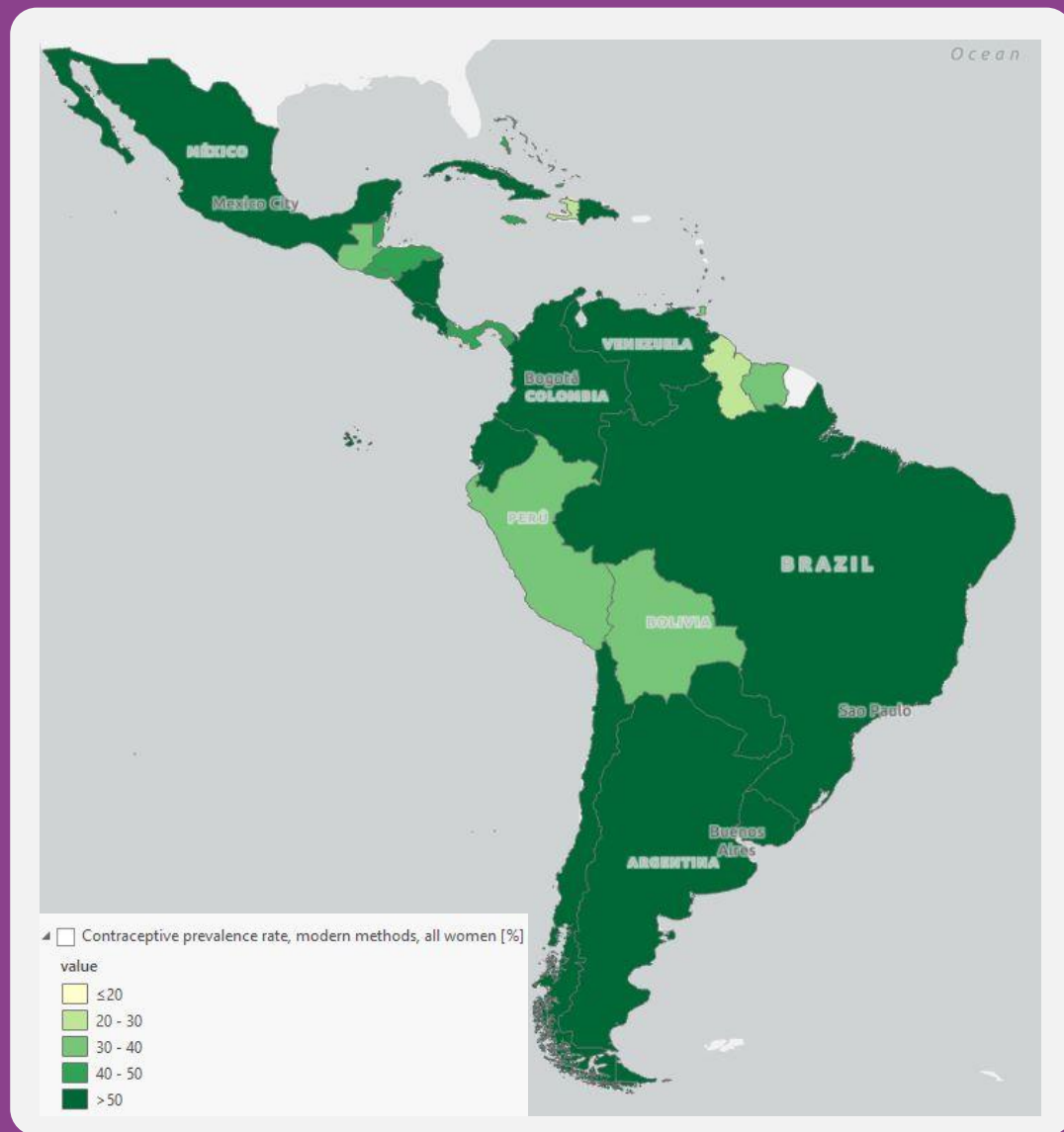
This dashboard shows EmONC data for Togo. It features a map of Togo, a bar chart for population coverage, and a bar chart for the number of facilities. The title is 'Togo EmONC Dashboard'.

In development: Regional Portals

- Support regional mapping, tracking and programming
- Visualize any given indicator by region and country
- Map regional indicators

THE
POPULATION
DATA PORTAL

Data for action!



National Portal Statistics Hub

Official Statistics provide data about the nation's people, place and economy. This portal is intended to help users gain access to basic information to keep users well informed and assist in good policy and decision making.



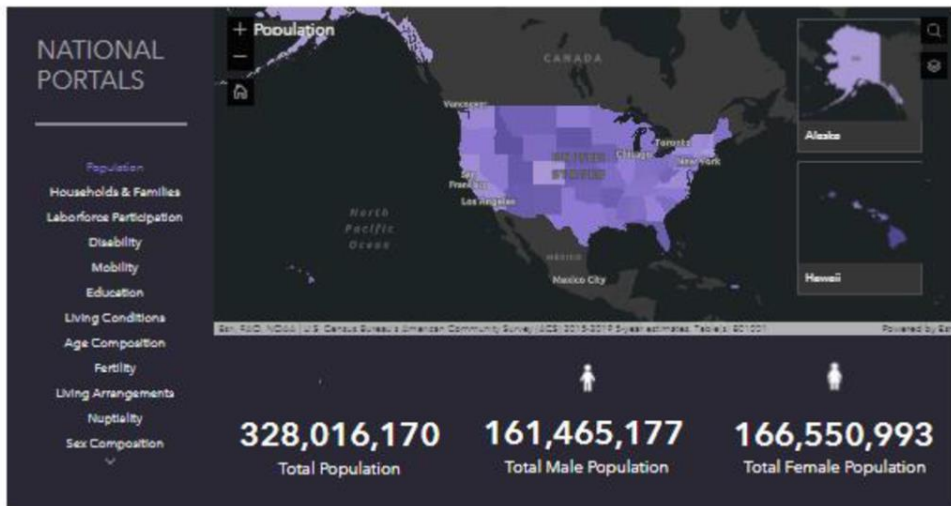
Technical Division



Welcome to "Country" National Portal. This site is designed to make information on economic and social development for "Country" accessible to the public, allowing the impact of policies and programs to be better understood. If you are looking to develop knowledge about a particular topic or geography, make comparisons or understand change over time this portal will help you make more informed decisions.

Experience Builder App

Enjoy the Experience gallery; check out the various widgets available to help you explore, search and find different experiences, and learn about the subject you are interested in.



In development: National Portals - also for Census Dissemination

Ensure countries have instruments and resources to disseminate **georeferenced census data** for their respective **national contexts**

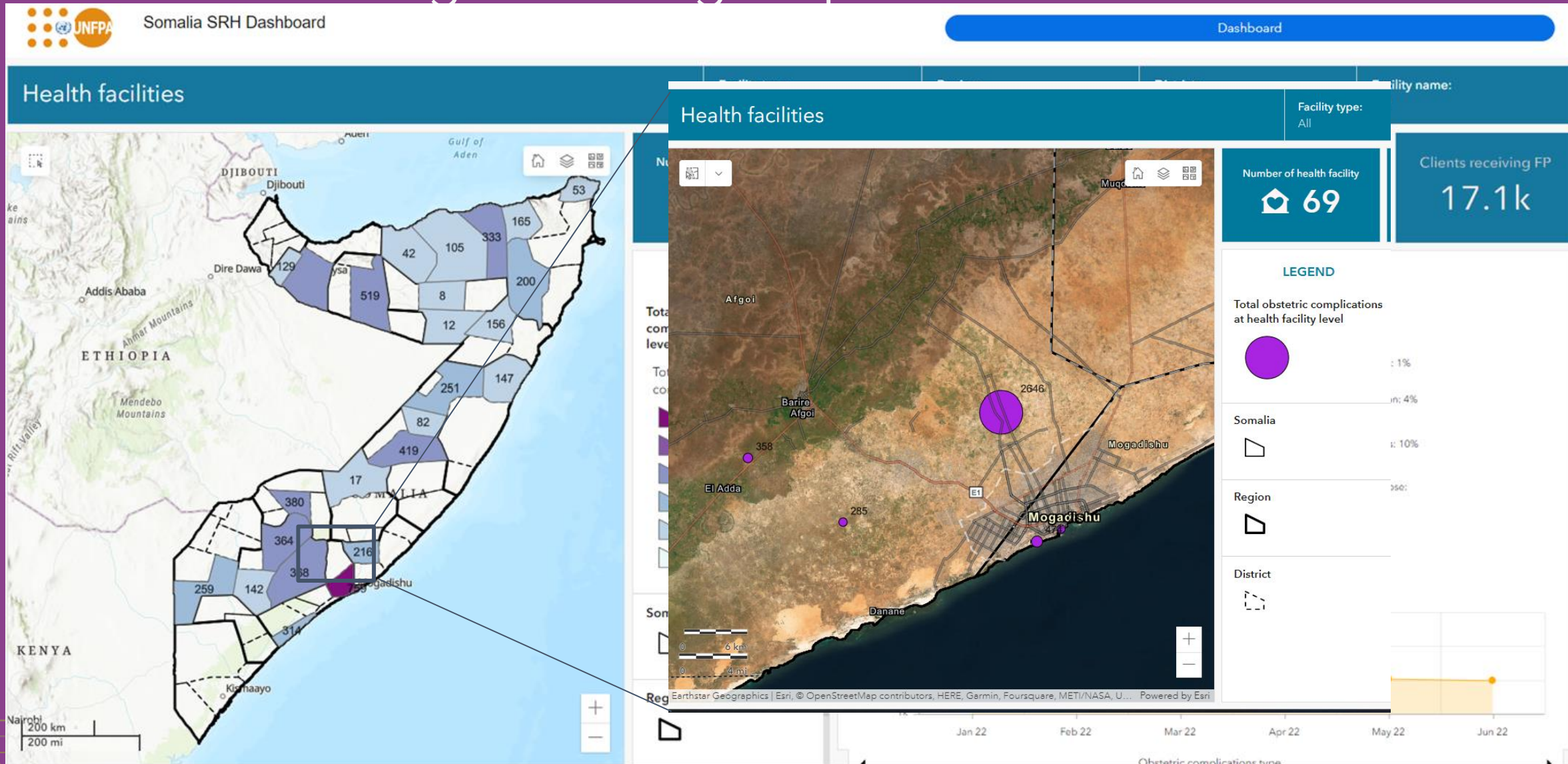
Explore Data by Topic

Data is critical to decision making. Explore the various categories and leverage data needed to provide your community with authoritative information needed to make better decisions and accomplish your goals.

THE
POPULATION
DATA PORTAL

Data for action!

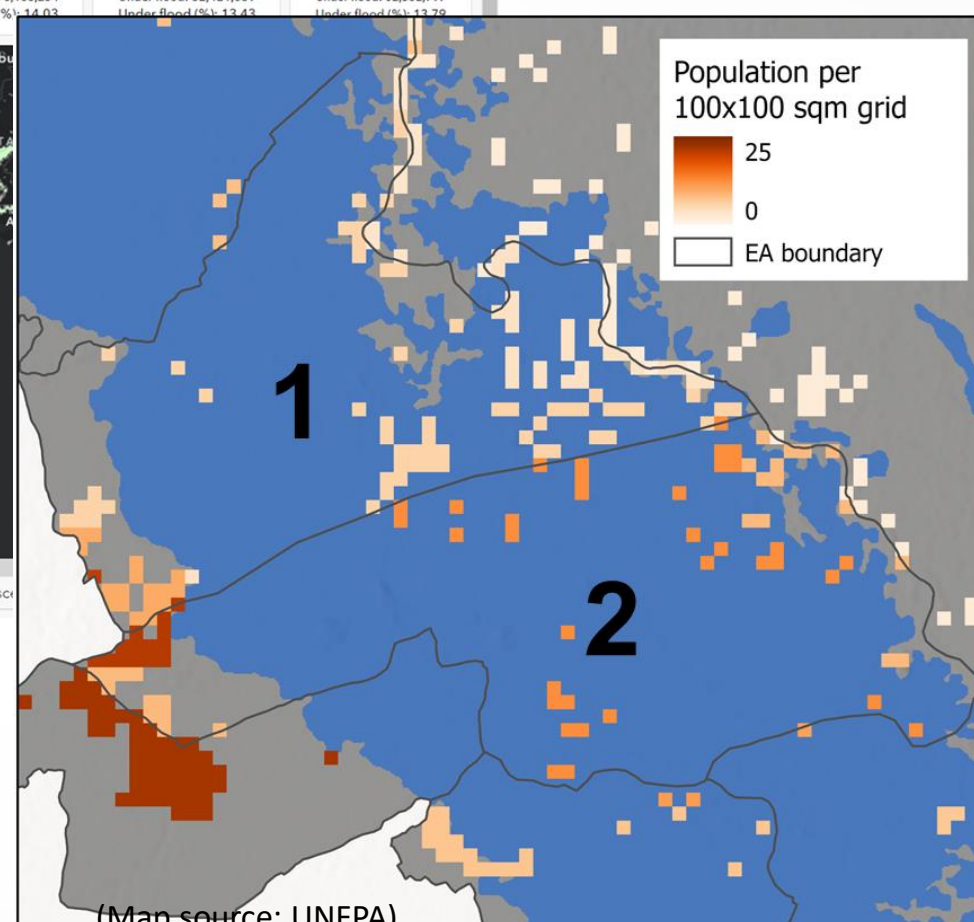
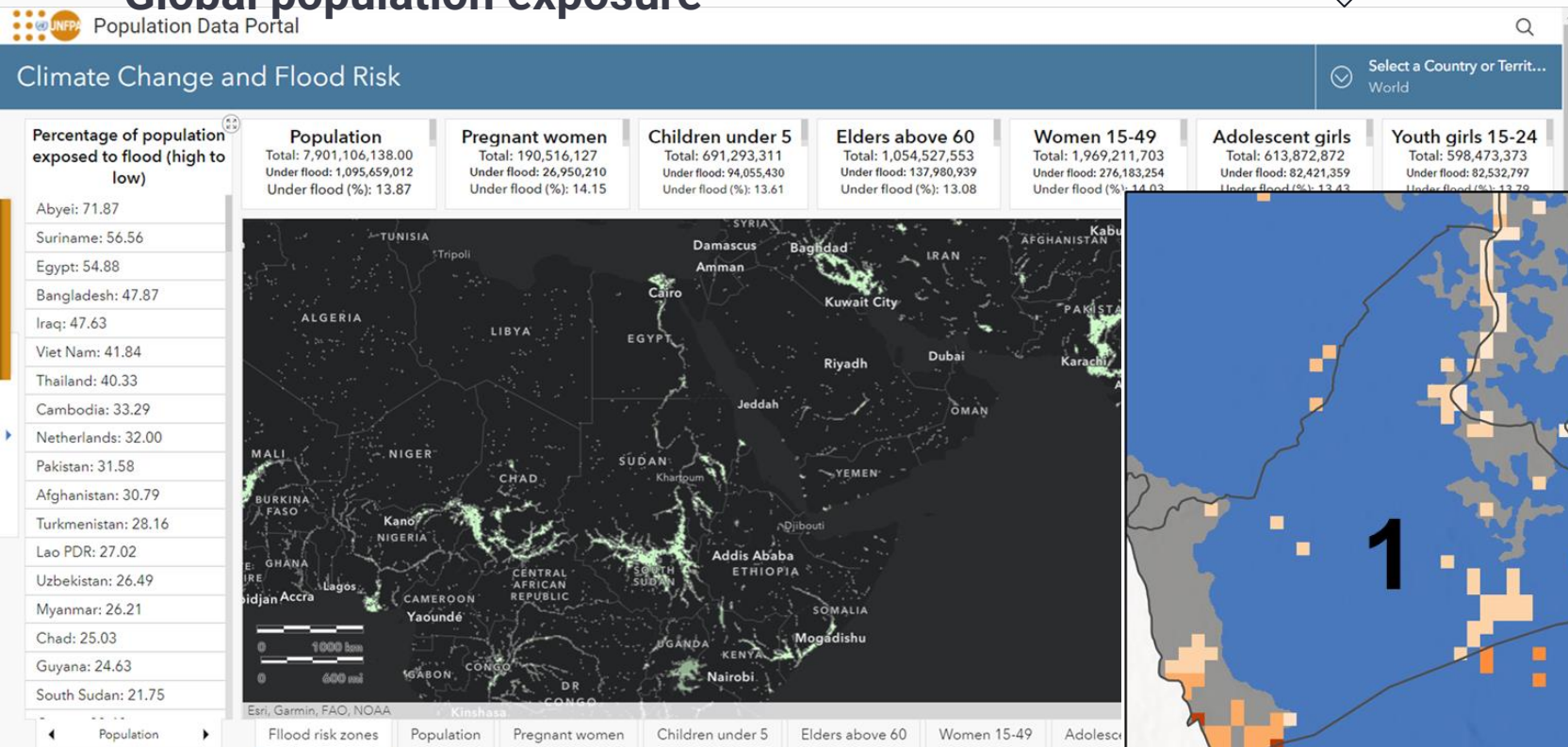
PDP and Programming Impact



Climate Change: Mapping Population Exposed to Flood

Global population exposure

From Global to Local



Malawi population exposed in flood by storm Ana, Jan 2022: examples of two enumeration areas

EA 1	
Total population:	638
Population in flood:	255
% pop in flood:	40%

EA 2	
Total population:	943
Population in flood:	341
% pop in flood:	36%

Data source: (European commission Joint Research Center; WorldPop)

Data source: (USGS; Malawi 2018 Census; GRID3 Building footprint)

The value-add of the PDP

- Supports analysis of national and sub-national progress toward achieving the Sustainable Development Goals through data disaggregation.
- By combining data sets and generating informative graphics and detailed maps, the portal enables broad use of existing census and survey data.
- The PDP uses official UN GIS boundary data at the national level; regional and national profiles are under development for more targeted analysis.
- All maps, charts, and data tables from the Portal can be exported into downloadable files for further use and analysis.

Potential users and uses of the PDP

- *Donors and national and local policymakers* - effective programming and monitoring of who is left behind.
- *Program managers and implementing partners* – identification of the most vulnerable populations and priority areas for strengthening.
- *Academic and research organizations* - undertake analyses using the multi-layered data to explore trends across and within countries and identify research priorities.
- *Civil society* - tracking of the SDGs to hold country governments and partners accountable to ensure that no one is left behind.

Insights from the PDP for modernizing statistical systems

- The PDP methodology can be adapted to any set of indicators by national statistical organizations to promote data access and utilization.
- The PDP approach can be used to enhance census data analysis, dissemination and use, capitalizing on the geo-referenced data from the 2020 census round and other surveys.
- National/regional data portals integrating data from multiple sources can be developed to facilitate disaggregated analysis, including through use of small area estimation techniques.

Shukran! Thank you!

منتدى الدوحة للبيانات
من أجل الابتكار في التنمية المستدامة
DOHA DATA FORUM
FOR INNOVATION IN SUSTAINABLE DEVELOPMENT